

PART OF N.E. 1/4, SEC. 32, T.7N., R.2W., S.L.B. & M.

PLAIN CITY BLOCK 10, PLAT A

TAXING UNIT: 21

SCALE 1" = 50'

SEE PAGE 39

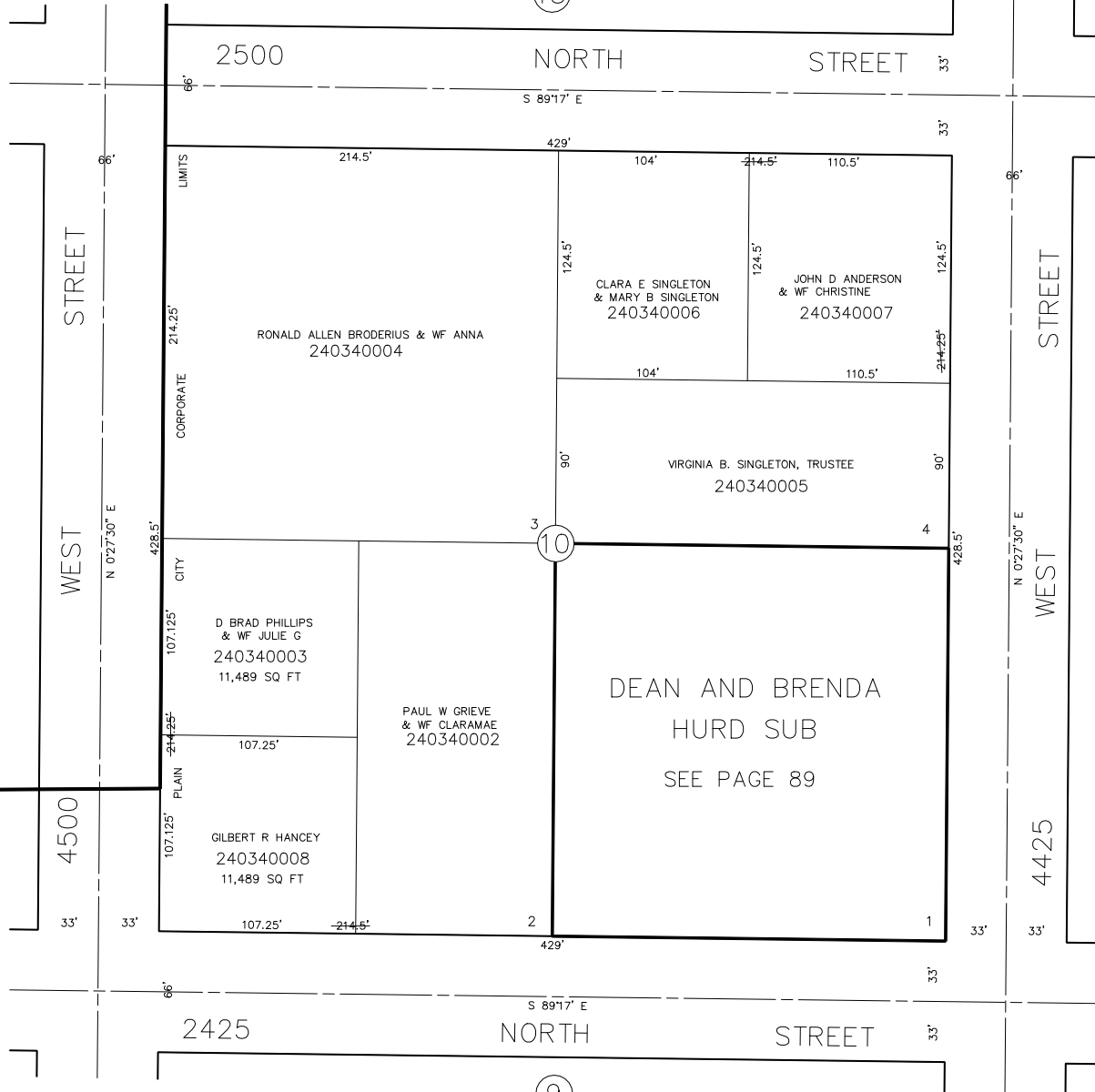
(15)

2500

NORTH

STREET

S 89°17' E



SEE BOOK 19
PAGE 31

SEE PAGE 35

(11)

(9)

SEE PAGE 33

SEE ORIGINAL DEDICATION
PLAT OF PLAIN CITY IN
BOOK 5, PAGE 80 OF RECORDS.